

Wireless technical contact
5246 16

10869899 34/22



GIRA

General safety instructions

This product contains button cells. Swallowing button cells may cause severe internal burns within two hours. This can be fatal. Do not swallow batteries. Risk of burns from hazardous materials. Immediately seek medical attention if batteries have been swallowed or inserted into any part of the body. Keep new and used batteries away from children. Danger of acid burns from bursting or leaking batteries. These instructions are part of the product and must remain with the end customer.

Observe the commissioning order

Commissioning order for the security system Alarm Connect:

1. Mount the alarm control unit and put it into commission (battery and 230 V connection).
2. Configure the project in the GPA and transfer it to the alarm control unit memory.
3. Install all other devices, put into commission (insert batteries, etc.) and check the wireless connection to the alarm control unit.
4. After successful verification, set the alarm control unit to operation mode.

Failure to observe the commissioning sequence will render commissioning of the safety system unsuccessful.

Product features

The wireless technical contact can be connected to wired sensors or devices with appropriate interfaces. A technical alarm is triggered if an event is detected. The alarm is displayed and confirmed on the wireless operating unit.

Sticker with Hardware ID

The device comes with two stickers with the Hardware ID. You can use one of the two stickers for your site map and simply scan the Hardware ID with an appropriate scanner during configuration in GPA.

Included in delivery

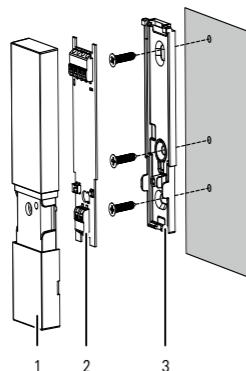
- 1 x wireless technical contact
- 1 x mounting hardware
- 1 x operating instructions
- 2 x stickers with Hardware ID

Ensure the package contents are complete and undamaged. Please see "Warranty" in case of any defects.

Required accessories

- Alarm control unit Connect (item no. 5201 00)
- Wireless operating unit (item no. 5212 03)

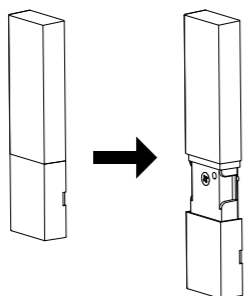
Device description



- 1 Upper housing section incl. sliding lid
- 2 Circuit board
- 3 Lower housing section

Sliding lid

The sliding lid hides the mounting screw of the upper housing section and the lower housing section. Only when the sliding lid is pushed down is the mounting screw accessible. When pushing the sliding lid down, no tampering alarm is triggered.



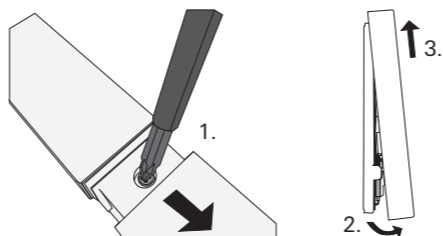
Selecting the installation site

Installation site

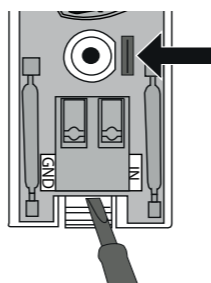
- Note the following:
- Mount close to the technical device or the location to be monitored.
 - The environment of the mounting location must not affect wireless transmission.
 - Do not assemble behind the device to be monitored.

Install the wireless technical contact

1. Push the sliding lid down and detach the upper housing section from the lower housing section as shown.



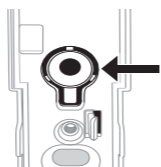
2. Carefully detach the circuit board from the lower housing section using the appropriate tools. Ensure that the locking hook (see arrow) is pressed next to the screw hole. Do not remove the protective foil from the batteries!



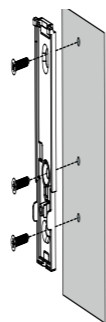
3. Align the lower housing section, mark the drilling holes, drill and insert wall plugs. Alternatively, adhesive mounting of the wireless technical contact is possible. Some adhesive tape is included with the product for this purpose.

Disconnecting surface for tamper contact

The disconnecting surface of the tamper contact must always be secured with a screw, regardless of the method of attachment used for the wireless technical contact.



4. Mount the lower housing section.

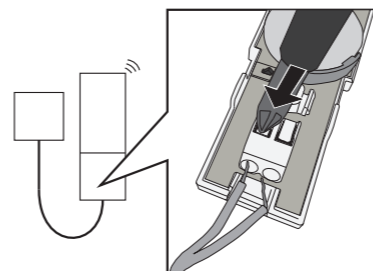


5. Attach the circuit board to the lower housing section.

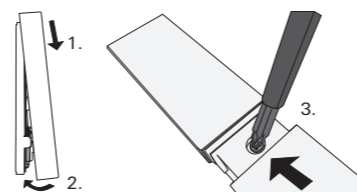
Wired sensor resistance

Only connect wired sensors without resistance (0 Ω).

6. Using the terminal, wire the wired sensor to the circuit board.



7. Place the upper housing section on the lower section and screw it into place.



Commissioning the wireless technical contact

Conditions for device commissioning

The project must first be successfully commissioned in GPA (see "Commissioning order").

Gira Project Assistant (GPA)

The security system Alarm Connect is configured via GPA. The following settings are made in GPA for the wireless technical contact in GPA:

- Enter device name.
- Assign hardware ID.
- Set up alarm rules.
- Put the project into commission.

1. Parameterise the wireless technical contact in GPA and put the project into commission.
2. Remove the protective foil from the batteries and wait for the initialisation phase. The wireless technical contact is automatically detected by the alarm control unit Connect.

Batteries inserted too early

If the units have been activated before start-up, they are in "sleep mode" and can no longer connect to the alarm centre. In this case, the batteries must be removed and reinserted.

Status LED

Behaviour	Meaning
Lights up red continuously	Tamper alarm
Alternates quickly between green and red	Initialisation phase
Blinks red, quickly and for a max. of 10 s	Error initialisation phase
Blinks green, quickly and for a max. of 5 s	Registration phase
Lights up green for approx. 3 s, then turns off	Registration successful
Blinks red in short intervals for a max. of 10 s	Registration error
Blinks green, quickly every 2 s and in cases of a status change, 1x quick red flash	Test run

Stand-by mode

After commissioning of the device, communication must take place between the device and the alarm control unit Connect within 7 min. After 7 min, the device automatically switches to stand-by mode. If the device does not receive a signal from the alarm control unit Connect within the 7 min period, the stand-by mode can not be ended automatically. The device must then be reactivated (remove and replace the battery) so that communication can be established with the alarm control unit Connect. Always observe the commissioning order.

Check the signal quality of the wireless connection

Check the wireless connection to the alarm control unit

Check the signal quality of the wireless connection between the alarm control unit Connect and the device.

1. Activate the test mode in the GPA under [security system] -> [Diagnosis and test]. The wireless technical contact automatically sends a signal.
2. Check the signal quality.
 - Bad signal quality:** Insert a wireless repeater and check the signal quality again.
 - Good signal quality:** End test mode.

Replacing the battery

WARNING

Explosion hazard in case of improper handling of batteries. Do not throw batteries into the fire, and do not recharge batteries, as this may result in a risk of explosion.

WARNING

Danger of acid burns from bursting or leaking batteries. Always change an empty battery for a new one of the same type.

Replacing the battery

Replace the battery as soon as the "low battery" display appears in the Display of the wireless operating unit.

1. Push down the sliding lid.

2. Loosen the mounting screw and remove the upper housing section from the lower housing section. The tamper alarm is triggered.
3. Remove the batteries and replace the battery with a new battery of the same type (see technical data). **Observe polarity!**
4. Place the upper housing section on the lower section again, screw it into place and close the sliding lid.
5. Acknowledge the tamper alarm on the wireless operating unit.



Remove empty batteries immediately and dispose of them in an environmentally-friendly way. Do not dispose of batteries with household waste. Local authorities provide information about environmentally-sound disposal. The end consumer is legally required to return used batteries in accordance with legislative requirements.

Technical data

Power supply:	Type C: Internal batteries
Battery	
Type:	lithium, CR 2032
Capacity:	210 mAh
Voltage:	DC 3 V
Quantity:	2
Battery life:	approx. 4 years
Wireless	
Frequency band:	868.0 - 868.6 MHz 868.7 - 869.2 MHz
Transmission capacity:	max. 10 mW
Range:	100 m (free field)
Device – general	
Connections:	1 x Zero-voltage relay contact terminal (0 Ω)
Optical display:	Status LED (red/green)
Ambient temperature:	-10°C to +55°C
Storage temperature:	-35°C to +70°C
Humidity:	93 %
Environmental class:	II
Compliant with:	EN 50131 Level 2 EN 62368-1 EN 301489-1 EN 301489-3 EN 61000-6-3 EN 50130-4 EN 300220-1 EN 300220-2
Certification body:	Telefication B.V.
Dimensions (H x W x D):	100 x 30 x 15 mm

Conformity

Gira Giersiepen GmbH & Co. KG hereby declares that the wireless system type item no. 5246 16 conforms to Directive 2014/53/EU. The complete item number can be found on the device. The complete text of the EU Declaration of Conformity can be found either in the download area (gira.de/Konformitaet), or directly via the online catalogue at the product (katalog.gira.de).

Disposal



The Gira wireless technical contact is an electric/electronic device within the meaning of EU Directive 2002/96/EC.

High-quality materials and components were used in developing and manufacturing the device. These materials and components can be reused and recycled. Please consult the regulations governing the separate collection of electric/electronic waste applicable for your country. These devices may not be disposed of with household waste. The correct disposal of waste can prevent possible negative consequences to the environment and humans.

Warranty

The warranty is provided in accordance with statutory requirements via the retailer. Please submit or send faulty devices postage paid and with an error description to your sales representative (retailer / installation company / electrical contractor). The salesperson will forward the devices to the Gira Service Centre.

Gira

Gira
Giersiepen GmbH & Co KG
Electrical installation
systems

P.O. Box 1220
42461 Radevormwald
Phone: +49 2195 602 - 0
Fax: +49 2195 602 - 191
info@gira.de
www.gira.de