

GSM module
5204 00

10867741 14/20



GIRA

General safety instructions



Electrical devices may only be installed and connected by a qualified electrician.

Improper installation may result in serious injury, e.g. from electrical shock or fire, as well as equipment damage. This product contains a rechargeable battery. These instructions are part of the product and must remain with the end customer.

Product features

Included in delivery

- 1 x GSM module
- 1 x operating instructions



SIM card

Observe the following:

- The SIM card (Mini SIM) is not included in the delivery and must be purchased separately.
- Using a SIM card may incur additional mobile costs.
- For prepaid cards, ensure sufficient credit or activate automatic recharging. The credit balance is not displayed in the system.

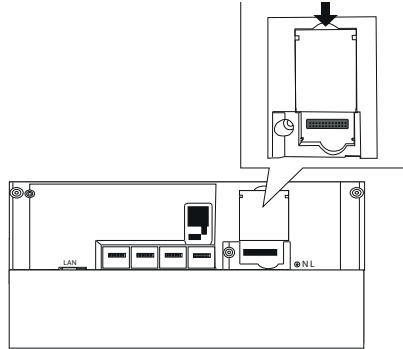
Ensure the package contents are complete and undamaged. Please see "Warranty" in case of any defects.

Required accessories

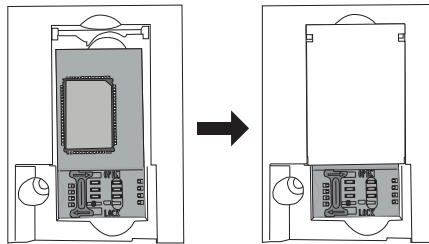
- Alarm control unit Connect (item no. 5201 00)

Inserting the GSM module

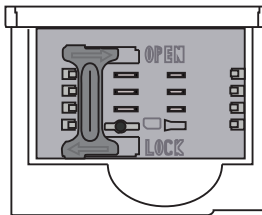
- Alarm control unit Connect: remove the housing cover (see operating instructions „Alarm control unit Connect“).
- Remove the cover (see arrow) of the GSM module slot.



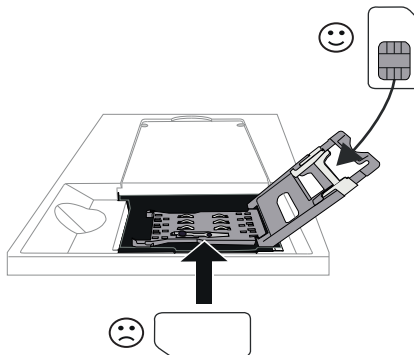
- Put the GSM module on the slot and close the cover again.



- Slide the lock of the SIM card holder in direction „OPEN“ (to the right) and unfold upwards.



- Insert the SIM card into the unfolded part of the SIM card holder. Note the insertion position of the SIM card! Do not put the SIM card directly on the contacts. If the SIM card is inserted incorrectly, the SIM card holder can not be closed.



- Close the SIM card holder and slide the lock back in the direction "LOCK" (to the left).



Insert SIM card

When positioning the SIM card, make sure that the contact surface of the SIM card lies exactly on the contact pins of the GSM module, otherwise no mobile connection will be established.

Which mobile phone tariff is needed?

	GSM	GPRS (2G)
Voice	Language service	for future use
SMS	SMS service	for future use

Check the signal strength of the mobile connection at the installation site of the alarm control unit

Before the alarm control unit Connect is mounted and wired with a GSM module, it must be checked whether the selected installation site allows a mobile connection and the signal strength is sufficient.



Determine the signal strength at the installation site

The field or signal strength determined during the measurement is only a snapshot.

Depending on the time of the day or the season as well as weather conditions, the quality of the signal strength may fluctuate.

- Connect the alarm control unit Connect to the rechargeable battery pack and the mains voltage (see operating instructions „Alarm control unit Connect“).
- Configure the alarm control unit Connect in the GPA and activate the mobile connection under [Alarm system] -> [Basic settings] -> [Configure connections]. It may be necessary to enter a SIM PIN to activate the SIM card.
- Commission the project.
- The LED of the GSM module shows if a mobile connection is possible with the SIM card.

LED of the GSM module

Behaviour	Meaning
Blinks regularly	no connection
Blinks with breaks	connected

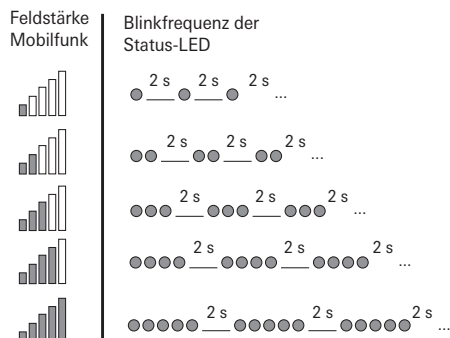
- After successful commissioning, disconnect the mains voltage and the Ethernet cable from the alarm control unit Connect.
- Hold the pairing button on the alarm control unit Connect for approx. 10 s until the status LED flashes. The status LED indicates whether there is a mobile connection and if the signal strength is sufficient.

Status LED

Behaviour	Meaning
Flashes red and orange	Error GSM module
Lights up permanently orange	GSM module ok, but no signal available
Blinks 1 to 5 x orange with 2 s break (see following picture)	Mobile connection available, but data connection* not possible
Blinks 1 to 5 x green with 2 s break (see following picture)	Mobile and data connection available

* data connection for future use

Signal strength mobile and flash sequence of the status LED



7. **Mobile connection available and good signal strength:** Mark the mounting site.
Mobile connection not available or signal strength too weak: Change the position of the alarm control unit. Connect in the room until there is a mobile connection and the signal strength is strong enough. If possible install the alarm control unit. Connect at this location.
8. End review: Press the pairing button briefly.
9. Disconnect the battery pack from the alarm control unit (unplug).
10. Install the alarm control unit. Connect (see operating instructions „Alarm control unit Connect“).

Conformity

Gira Giersiepen GmbH & Co. KG hereby declares that the wireless system type item no. 5204 00 conforms to Directive 2014/53/EU. The complete item number can be found on the device. The complete text of the EU Declaration of Conformity can be found either in the download area (gira.de/Konformitaet), or directly via the online catalogue at the product (katalog.gira.de).

Disposal



The Gira wireless magnetic contact is an electric or electronic device in the sense of EU Directive 2012/19/EU.

High-quality materials and components were used in developing and manufacturing the device. These materials and components can be reused and recycled. Please consult the regulations governing the separate collection of electric/electronic waste applicable for your country. These devices may not be disposed of with household waste. The correct disposal of waste can prevent possible negative consequences to the environment and humans.

Warranty

The warranty is provided in accordance with statutory requirements via the retailer. Please submit or send faulty devices postage paid and with an error description to your sales representative (retailer / installation company / electrical contractor). The salesperson will forward the devices to the Gira Service Centre.

Gira

Gira
Giersiepen GmbH & Co KG
Electrical installation systems

P.O. Box 1220
42461 Radevormwald
Phone: +49 2195 602 - 0
Fax: +49 2195 602 - 191
info@gira.de
www.gira.de