

Bus coupler 3

Order No. : 2008 00

Bus coupler 3 external sensor

Order No. : 2009 00

Operating instructions**1 Safety instructions**

Electrical devices may only be mounted and connected by electrically skilled persons.

Serious injuries, fire or property damage possible. Please read and follow manual fully.

During installation and cable routing, comply with the regulations and standards which apply for SELV circuits.

During renovation work, protect the device against soiling through paint, wallpaper paste, dust, etc. Device can be damaged.

These instructions are an integral part of the product, and must remain with the end customer.

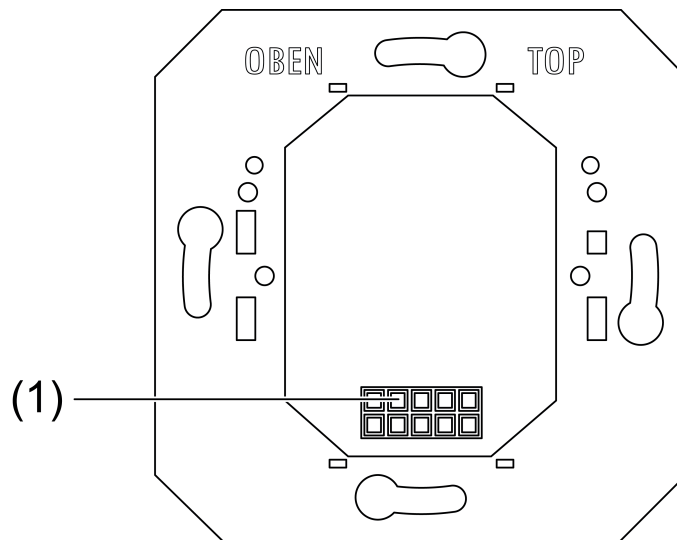
2 Device components

Figure 1: Front side

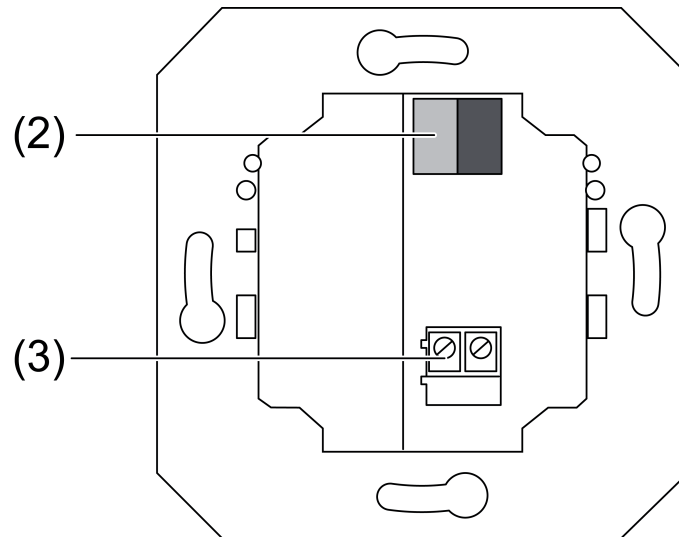


Figure 2: Rear side

- (1) Interface to KNX application module
- (2) Bus connection
- (3) Optional: Temperature sensor connection

3 Function

Intended use

- Coupling of KNX application modules with programming button to KNX systems
- Installation in appliance box to DIN 49073

Product characteristics

- Supply of KNX application modules
- Depending on equipment: Connection of external temperature sensor (see chapter 5.2. Accessories) and forwarding of the measuring signal to the application module

i The device will not function without an application module.

4 Information for electrically skilled persons

4.1 Fitting and electrical connection



DANGER!

**Electrical shock on contact with live parts in the installation environment.
Electrical shocks can be fatal.**

Before working on the device, disconnect the power supply and cover up live parts in the working environment.

Mounting and connecting the device

Observe the installation orientation. Note the **TOP** marking.

- Connect the device to the bus cable with the bus connection terminal (2). Red = +, Black = –.
- Optional: Connect the external temperature sensor to the terminal (3).
- Install the device in the appliance box.
- Attach the KNX application module.

5 Appendix

5.1 Technical data

Ambient temperature	-25 ... +55 °C
Storage/transport temperature	-25 ... +70 °C
Protection class	III
KNX medium	TP 256
Rated voltage KNX	DC 21 ... 32 V SELV

5.2 Accessories

Remote sensor	Order No. 1493 00
Protective cover plate	Order No. 0015 01

5.3 Warranty

The warranty follows about the specialty store in between the legal framework as provided for by law

Please submit or send faulty devices postage paid together with an error description to your responsible salesperson (specialist trade/installation company/electrical specialist trade). They will forward the devices to the Gira Service Center.

Gira
Giersiepen GmbH & Co. KG
Elektro-Installations-
Systeme

Industriegebiet Mermbach
Dahlienstraße
42477 Radevormwald

Postfach 12 20
42461 Radevormwald

Deutschland

Tel +49(0)21 95 - 602-0
Fax +49(0)21 95 - 602-191

www.gira.de
info@gira.de