

LV touch dimmer insert
System 2000

Order no.: 0331 00

Order no.: 0495 05

Function

LV touch dimmer (phase cut-on dimmer) for switching and dimming extensive light sources such as:

- 230 V incandescent lamps
- 230 V halogen lamps
- LV halogen lamps in conjunction with conventional transformers

Switching and dimming commands are given when the covers of the dimmer, of the extension insert or of the radio transmitter are actuated.

The LV touch dimmer insert works on the basis of the two-area principle, i. e. there is one touch area each for the 'brighter' and 'darker' dimming directions. The lights are turned on by a lamp-saving soft start.

This Operating Instructions paper describes the functionality in combination with the manual attachment. For the exact functionality in connection with the use of other attachments or of the remote control unit, respectively, please refer to the corresponding instructions.

Operation from the switched-off state:

Short touch (less than 400 ms):

UPPER or LOWER touch area
or full area: ON

Longer touch (more than 400 ms):

UPPER touch area: Dimming from minimum to maximum brightness

LOWER touch area: Turning on to minimum brightness

Operation from the switched-on state:

Short touch (less than 400 ms):

UPPER or LOWER touch area
or full area: OFF

Longer touch (more than 400 ms):

UPPER touch area: Increasing the light intensity to maximum (dimming up)

LOWER touch area: Decreasing the light intensity to minimum (dimming down)

Full-area operation
(3 sec. min.):

The current brightness is stored and adjusted upon restarting (short actuation). The storing process is indicated by a soft start.

**Warning**

Attention: Electrical equipment must be installed and fitted only by qualified electricians and in observance of the applicable accident prevention regulations.

Not suitable for disconnecting.

When the LV touch dimmer is off the load is not electrically isolated from the mains.

To prevent electric shocks, disconnect the power supply before working on the device (by cutting out the circuit breaker).

When using conventional transformers, protect the primary side of each transformer by a fuse as indicated by the manufacturer. Only use safety transformers as per EN 61558-2-6.

Non-observance of the installation instructions may cause fire or other hazards.

Installation Instructions

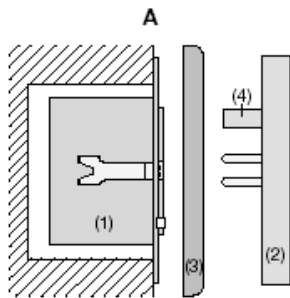
Fit LV touch dimmer insert (1) into a box as per DIN 49073 (Fig. A).

The connecting terminals of the insert must be at the bottom.

Use the LV touch dimmer insert only in combination with an attachment. Plug attachment (2) onto the insert (1) together with frame (3).

The electrical contact is established through plug (4).

The LV touch dimmer insert consists of the dimmer insert and the plugged-on control or receiver part. Plug on the attachment prior to applying the mains voltage.

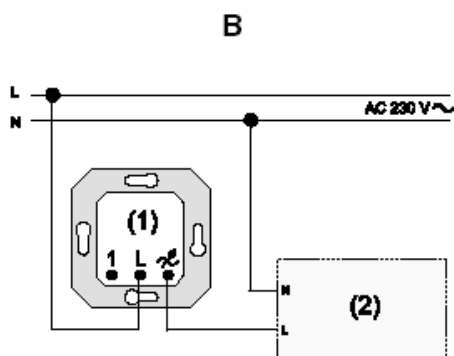


Do not connect capacitive loads (e. g. Tronic transformers) to the LV touch dimmer insert. Mains failures of longer than 1 sec. will lead to switching off the dimmer and to the loss of the brightness value stored.

The overall power rating of the consumers connected must not exceed the maximum load specified in the technical data.

Connection

Connect as shown in Fig. B.



Load the transformers with lamps up to at least 85 % of their rated loads. The overall load including transformer losses must not exceed the maximum power rating.

Operation with mixed loads of the specified types is possible up to the total admissible load.

A minimum load of 20 W/VA is required, or the lamps connected may be caused to flutter. Depending upon the type of installation, the maximum connected load must be reduced by:

- 10 % per 5 °C exceeding of the ambient temperature of 25°C
- 15 % for installation in wooden, gypsum plaster or hollow walls
- 20 % for installation in multiple combinations

Short-Circuit Protection

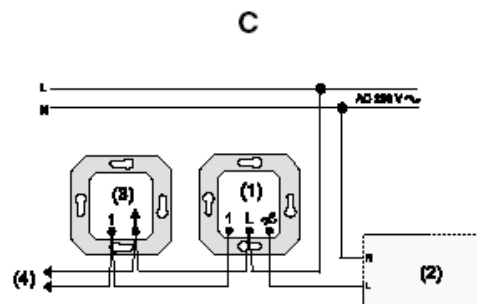
T 2 H 250 microfuse.

In case of malfunctioning, check the micro-fuse first. Do not use any fuses other than original.

Overtemperature Protection

Switching off in case of an excessively high ambient temperature. After cooling down, the device must be switched back on.

For dimming from several places, refer to Fig. C.



When the LV touch dimmer insert is fully loaded, up to 10 power attachments can be connected to increase capacity. Use LV power attachments (built-in or series-mounted units).

Connect as shown in Fig. D

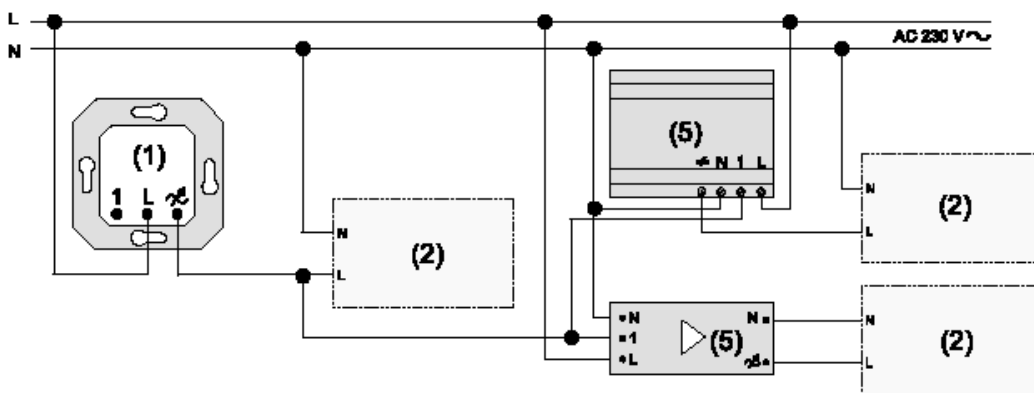
- (1) LV touch dimmer insert
- (2) Load
- (3) extension
- (4) for further extensions
- (5) Power attachments (EB or REG)

Note the technical connection conditions of the power stations.

Centralised multi-service control pulses of the power stations may be noticeable by short-time flickering at low dimming positions.

Possible low humming noise of the unit is caused by the interference suppression choke.

D



Using Extensions

Extension insert: The same functionality with an attachment as on the LV touch dimmer insert.

Mechanical button (normally open):

Short push: ON/OFF
Longer push: Dimming to maximum brightness.


Dwell time of approx. 1 sec. at maximum, then dimming down to minimum brightness.

Dwell time of approx. 1 sec. at minimum, the dimming up to maximum brightness.

This procedure repeats continuously. Storing any brightness value by the mechanical push-button (normally open) is not possible.

Illuminated mechanical pushbuttons must have a separate N terminal. Control from an extension unit is possible only if the attachment on the main unit is in place.

Specifications

Rated voltage:	AC 230 V ~, 50 / 60 Hz	Different types of extension units can be combined.
Connected load:		Total length of extension connecting cable: max. 100 m
Best.-Nr. 0331 00:	20 - 500 W / VA	
Best.-Nr. 0495 05:	20 - 475 W / VA	
Type of loads:	<ul style="list-style-type: none">- 230 V incandescent lamps- HV halogen lamps- Conventional transformers- Mixed loads of the specified types.	Basic brightness: factory-set
Minimum load:	20 W/VA	As per EN 60669-2-1 (01.2000), some lighting of the lamp should be perceptible over the entire load range (at rated voltage - 10 %) when the dimmer is at dark position.
Connectable power attachments:	10 units max.	 The symbols used to identify dimmer loads designate the type of the electrical behaviour of loads connected to dimmers: R = ohmic, L = inductive
Number of Extensions:		
extension insert, mechanical push button:	unlimited	
extension insert for presence detector and automatic switch:	10	

Acceptance of guarantee

We accept the guarantee in accordance with the corresponding legal provisions.

Please return the unit postage paid to our central service department giving a brief description of the fault:

Gira
Giersiepen GmbH & Co. KG
Service Center
Dahlienstrasse 12
D-42477 Radevormwald

Gira
Giersiepen GmbH & Co. KG
Postfach 1220
D-42461 Radevormwald

Telefon: +49 / 21 95 / 602 - 0
Telefax: +49 / 21 95 / 602 - 339
Internet: www.gira.de